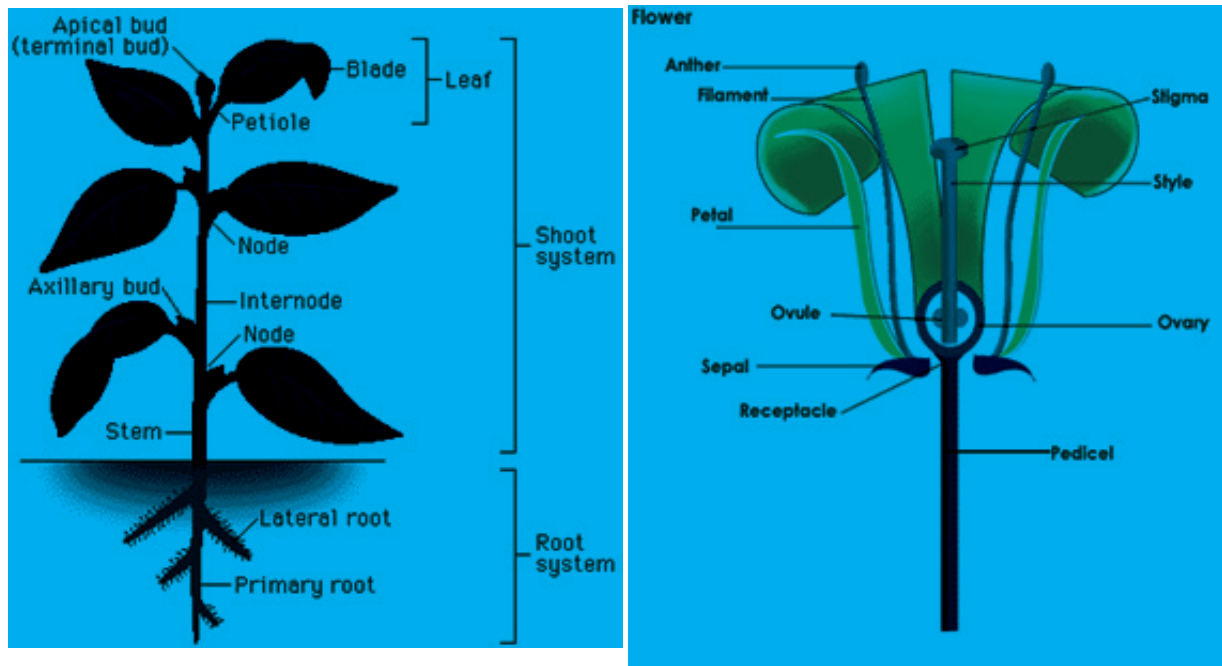


# Plant adaption

## Worksheet 1

1. Have a look at the structure of the plant and the structure of a flower.



[http://www.phschool.com/science/biology\\_place/biocoach/plants/basic.html](http://www.phschool.com/science/biology_place/biocoach/plants/basic.html)

<http://www.sparknotes.com/biology/plants/plantstructures/section5.rhtml>

Use the pictures and the websites to answer the questions:

- Which part of the leaf has the main function to carry out photosynthesis?
  - The petiole is part of which plant organ?
  - Where on the stem are the axillary buds attached?
  - What is the role of the sepals?
  - What is stamen ?
  - Where does pollen land ?
2. What is adaptation? Can you think of any examples of plant adaptation ? What do plants adapt to?  
Watch the film and answer the questions:

<http://studyjams.scholastic.com/studyjams/jams/science/plants/plant-adaptations.htm>

## Plant adaption

3. Watch a film <http://www.youtube.com/watch?v=C1Ib0-BIBKU> and write down the examples of adaptation of the following rainforest plants:

Plant	Examples of adaptation
Pitcher plant	
Mimosa pudica	
Epiphyte plants	
Flowers	
Mangroves	
Travelers palm	

4. Adaptation was also a vital concept in Charles Darwin's evolution theory. Look at the drawing of *Angraecum sesquipedale* orchid. (<http://blog.thaumatography.net/category/uncategorized/>)



Seeing the plant Charles Darwin predicted existence of a very specific insect. Can you think why?

Check your answer: <http://www.theguardian.com/science/lost-worlds/2013/oct/02/moth-tongues-orchids-darwin-evolution>

<http://cryptomundo.com/crypto-zoo-news/darwins-xanthopa/>